

# Meeting Planner Guide



# The Premiere Place to Meet in the South

Surprise your meeting or convention attendees with a fun, relaxing event in Hot Springs. The Arlington offers a conference center, exhibit center and crystal ballroom as well as a dedicated staff ready to help you plan your next event.

Our multi-use Conference Center accommodates 650 for banquets or 1,000 for meetings; an exhibit center totaling 11,520 square feet; and 15 additional meeting rooms accommodate from six to 120.

Our elegant and spacious Crystal Ballroom will seat 400 for dining or 600 theater-style, bringing the total available meeting/exhibit space to 45,000 square feet.

For even larger groups, the Arlington is within easy walking distance of the new 360,000-square-foot Hot Springs Convention Center, the largest meeting facility in Arkansas.



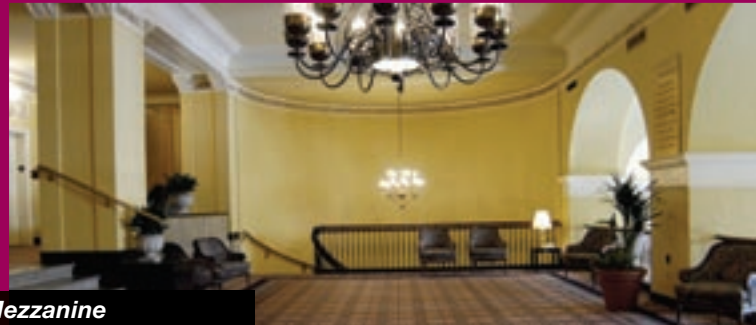
**Crystal Ballroom**



**Conference Center**



**Lobby**



**Mezzanine**



**Magnolia Room**



**Board Room**



## CONFERENCE CENTER

Ceiling Height: 13' • Completely Carpeted • Folding Partitions

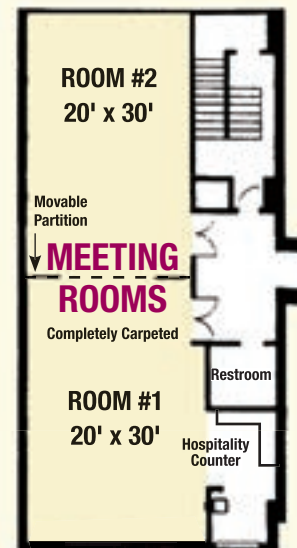
| MEETING ROOM                   | ROOM SIZE            | THEATRE MEETING SEATS | DINING SEATING |
|--------------------------------|----------------------|-----------------------|----------------|
| ROOM "A"                       | 25' x 56'            | 100                   | 64             |
| "A" FOYER<br>Lounge & Exhibit  | 20' x 45'            | N/A                   | N/A            |
| ROOM "B"                       | 43' x 64'            | 250                   | 200            |
| ROOM "C"                       | 50' x 64'            | 300                   | 240            |
| <b>Total Conference Center</b> | <b>8,250 sq. ft.</b> | <b>1,000</b>          | <b>650</b>     |



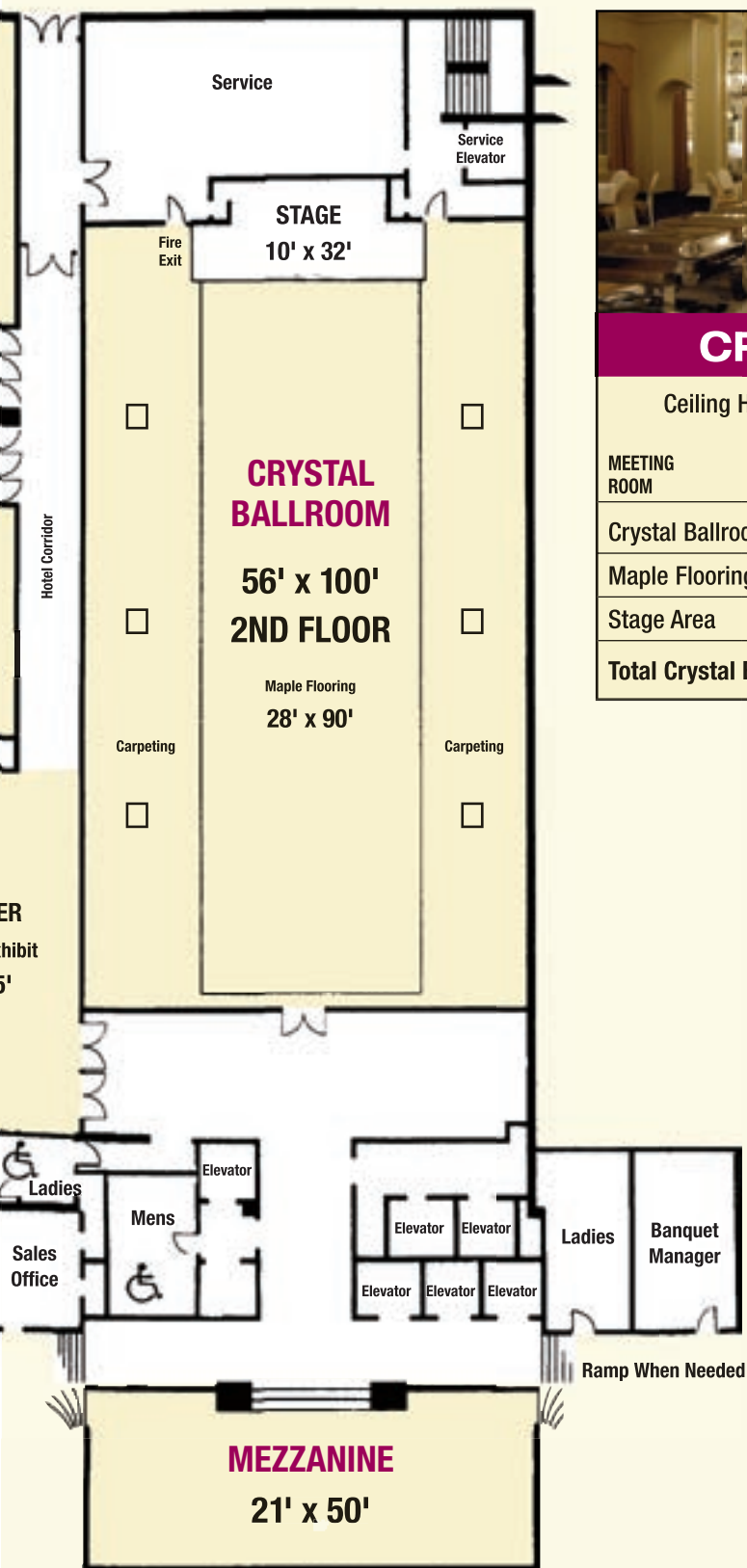
## MEETING ROOMS

Ceiling Height: 10' • Completely Carpeted

| MEETING ROOM                              | ROOM SIZE | THEATRE MEETING SEATS | DINING SEATING |
|---|-----------|-----------------------|----------------|
| CYPRESS (2nd floor)                       | 20' x 60' | 150                   | 72             |
| HICKORY (3rd floor)                       | 20' x 60' | 150                   | 72             |
| MAPLE (4th floor)                         | 20' x 60' | 150                   | 72             |
| OAK (5th floor)                           | 20' x 60' | 150                   | 72             |
| PINE (6th floor)                          | 20' x 60' | 150                   | 72             |
| SPRUCE (7th floor)                        | 20' x 60' | 150                   | 72             |
| or divided, 2 each floor<br>except SPRUCE | 20' x 30' | 65                    | 50             |



TYPICAL FLOOR PLAN  
2nd through 7th Floors



## CRYSTAL BALLROOM

Ceiling Height: 18' • Partially Carpeted w/Maple Flooring

| MEETING ROOM                  | ROOM SIZE            | THEATRE MEETING SEATS | DINING SEATING |
|-------------------------------|----------------------|-----------------------|----------------|
| Crystal Ballroom              | 56' x 100'           | 600                   | 400            |
| Maple Flooring                | 28' x 90'            | N/A                   | N/A            |
| Stage Area                    | 10' x 32'            | N/A                   | N/A            |
| <b>Total Crystal Ballroom</b> | <b>5,600 sq. ft.</b> | <b>600</b>            | <b>400</b>     |

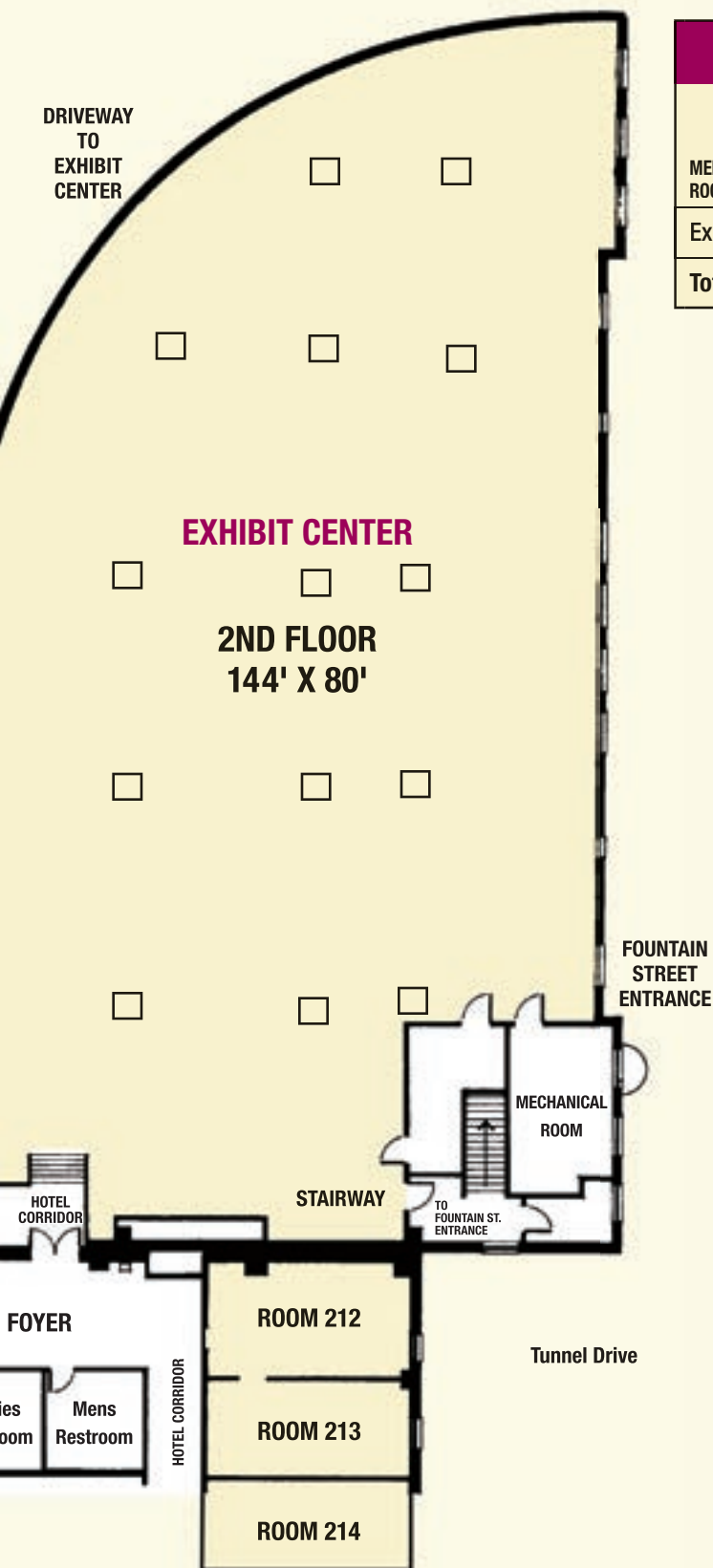


## MEZZANINE

Mezzanine (2nd Floor)

21' x 50'





## EXHIBIT CENTER

Ceiling Height: 10' to 12' • Finished Cement Floor

| MEETING ROOM                | ROOM SIZE             | THEATRE MEETING SEATS | DINING SEATING | EXHIBITS          |
|-----------------------------|-----------------------|-----------------------|----------------|-------------------|
| Exhibit Center (2nd Floor)  | 144' L x 80' W        | 700                   | 400            | 50 – 8' x 10' MAX |
| <b>Total Exhibit Center</b> | <b>11,520 sq. ft.</b> | <b>700</b>            | <b>400</b>     |                   |



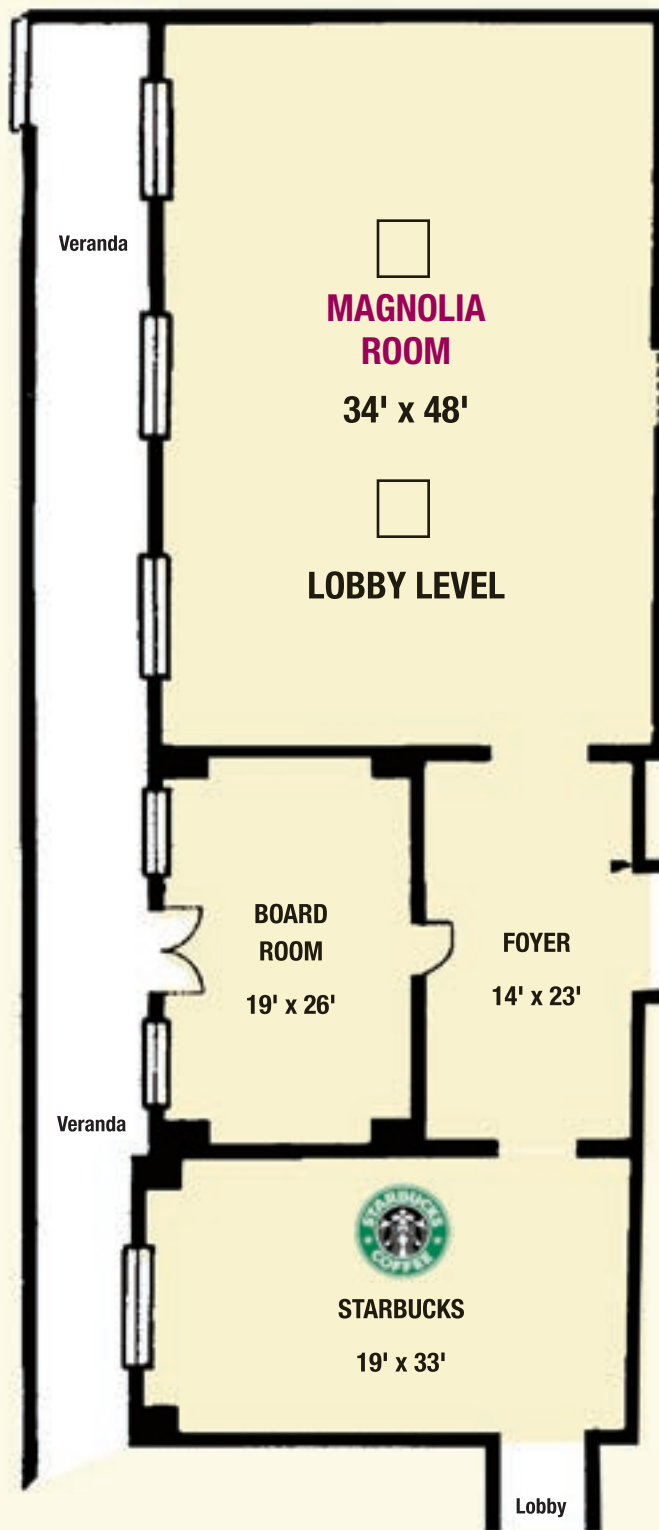
## MAGNOLIA ROOM

Ceiling Height: 16' 6" • Fully Carpeted

| MEETING ROOM  | ROOM SIZE | MEETING SEATS | DINING SEATING |
|---------------|-----------|---------------|----------------|
| Magnolia Room | 34' x 48' | 100           | 125            |
| Foyer         | 14' x 23' | N/A           | N/A            |
| Board Room    | 19' x 26' | 12            | 12             |
| Starbucks     | 19' x 33' | N/A           | N/A            |

## LOBBY LEVEL

- Board Room
- Dance Floor & Stage
- Fountain Room Grill
- Café I
- Café II
- Front Desk
- Lobby
- Lobby Bar
- Lobby Café
- Magnolia Room
- Motor Lobby
- Rest Rooms
- Silk & Saddle Lounge
- Venetian Dining Room
- Veranda
- Wine & Cheese Room
- Starbucks



## ARLINGTON MALL

- Beauty, Barber & Facial Salon
- Game Room
- Gift Shop
- Ladies' Apparel Shop
- Liquor Store
- Exercise Room



## Luxury. Hospitality. History.

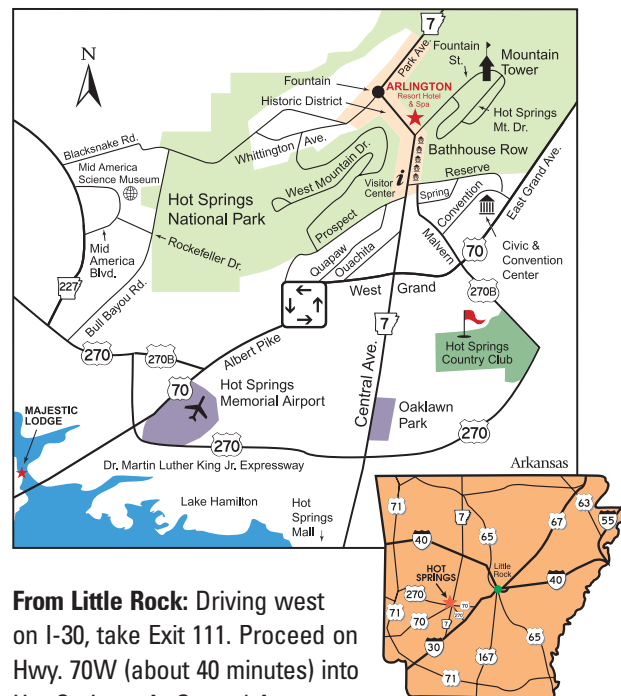
Nestled in the heart of historic downtown Hot Springs National Park in the Ouachita mountains, The Arlington Resort Hotel & Spa is an American treasure. Since 1875 the hotel has hosted presidents, dignitaries, movie stars, gangsters, sports heroes, legends and hundreds of thousands of others looking for a luxurious escape from everyday life in the famous spring-fed hot waters piped directly into the Arlington Bath House.

The Arlington has all of the ambiance and hospitality of a traditional, grand old Southern hotel, as well as a national park outside any door and complete country club privileges and championship golf for all of its guests at the Hot Springs Country Club. And with its prime location in the heart of historic downtown, art galleries, unique restaurants, charming antique shops and great entertainment are just steps away.

So what are you waiting for? Your special place is waiting at the Arlington.



## Map & Directions



**From Little Rock:** Driving west on I-30, take Exit 111. Proceed on Hwy. 70W (about 40 minutes) into Hot Springs. At Central Avenue, turn right (north). The Arlington is located just past Bathhouse Row.

**From Texas:** Driving east on I-30, take Exit 78. Proceed on Hwy. 7N (about 45 minutes) into Hot Springs. In the city, Hwy. 7 is also called Central Avenue. Continue north to 239 Central Avenue for the Arlington.



THE HEART OF HISTORIC HOT SPRINGS NATIONAL PARK

239 Central Avenue  
Hot Springs National Park, AR 71901

**FOR RESERVATIONS**  
**501-623-7771 • Fax 501-623-2243**

Toll-Free 1-800-643-1502

Sales Toll-Free 1-800-626-9768

Sales Fax 1-501-623-6191

[www.ArlingtonHotel.com](http://www.ArlingtonHotel.com)

E-mail: [groupsales@arlingtonhotel.com](mailto:groupsales@arlingtonhotel.com)

American Express, Discover, MasterCard, VISA accepted